

### ■ Objective

The various operations bound to Metering need to have a very good knowledge in specialized domains such as electrical power and energy, as well as metrology and calibration.

### ■ Target group

Technicians or engineers in charge with measurement of electrical energy.

### ■ Duration

The course can be lectured by an engineer in one day, in Laborelec or on site, and both usual languages have been considered.

### ■ Content of the training

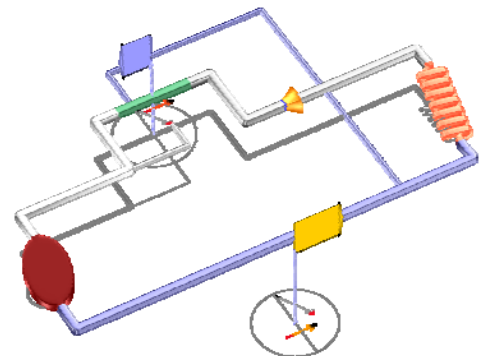
Starting from basics of electricity  
Literally shows the pulsating flow of energy  
RMS values explained  
Phase shift and  $\cos\phi$  operations  
Reactive power made clear  
4 Quadrant working, import / export  
Threephase power 4 wires, 3 wires, 3-2 bridges  
Reactive power compensation  
Use of TC, TT  
Out of balance working, errors in connections

### ■ Particular aspects

As far as the electrical power fundamentals are concerned, the didactical approach has been based on commented visual animations conceived as from "Videomodels<sup>®</sup>". Each participant will receive a CDrom textbook.

<sup>®</sup> Videomodels is a concept belonging to Pr Gueuning – ECAM - Brussels

### ■ Responsible : Alain Deffrennes - Laborelec



From R&D to operational assistance

### Five reasons for you to choose Laborelec:

- you have one-stop shopping for your energy needs;
- you get access to more than 40 years of experience;
- you get rapid service with reliable solutions;
- you increase the profitability of your installations;
- you benefit from independent and confidential advice.

Rodestraat 125  
B-1630 Linkebeek  
Belgium  
Tel: + 32 (0)2 382 02 11  
Fax: + 32 (0)2 382 02 41

[www.laborelec.com](http://www.laborelec.com)